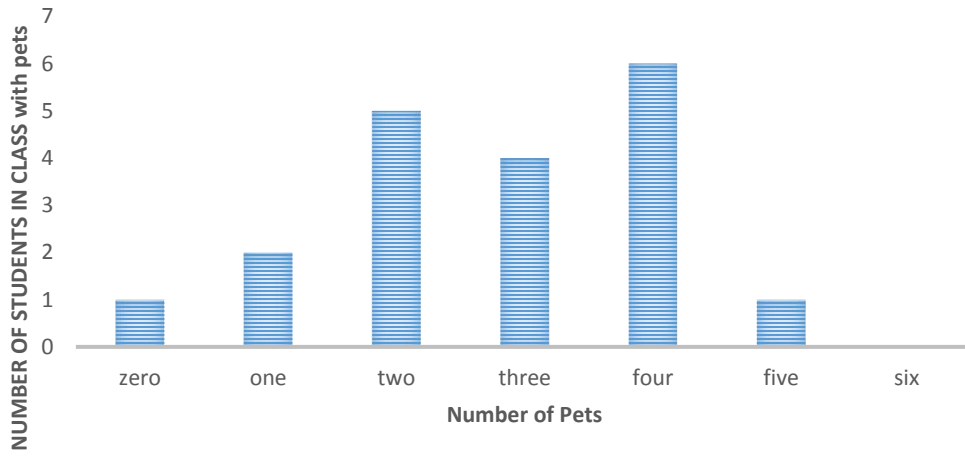


NUMBER OF PETS	Number of Students
zero	1
one	2
two	5
three	4
four	6
five	1
six	0

i would use this lesson to help students explore Data Analysis and surveys about the the number of pets each student has in their h the actual set of data.

NUMBER OF STUDENTS WITH PETS



d Statistics. the students would Collect and organize data using classroom
omes. the students will Match representations of a data set with